



2106 Pacific Avenue, Suite 300
Tacoma, WA 98402

DRAINAGE & DETENTION SYSTEM DESIGN

PROJECT:
Kolbe Residence
7001 82nd Ave SE
Mercer Island, WA 98040

PRPARED FOR:
NW Lifestyle Homes
11747 NE 1st Street Suite 210
Bellevue, WA 98005

DATE: March 23, 2022

PREPARED BY: Kayla Schunzel, EIT
REVIEWED BY: Zachary Crum, PE

The new Kolbe Residence Addition on Mercer Island, WA will include 2,122 square feet of new plus replaced hard surfaces, consisting of a single-family home addition and driveway. Table 1 below includes a site surfacing summary.

Table 1. Site Surfacing Summary

Replaced Vegetation (SF)	1,626
Replaced Hard Surface (SF)	1,136
New Hard Surface (SF)	986
Total New + Replaced Hard Surface (SF)	2,122

The project will add and replace more than 2,000 square feet but less than 5,000 square feet of hard surface area, have land disturbing activity of greater than 7,000 square feet but convert less than 0.75 acres of vegetation to lawn or landscaped area, and result in a net increase of impervious area between 500 and 5,000 square feet. The project is therefore required to meet Minimum Requirements #1-5. The project is eligible to use the Mercer Island Standard On-site Detention System Worksheet to meet Minimum Requirement #5: Low Impact Development standards. The proposed detention pipe is prescribed from the Mercer Island Standard On-site Detention System Worksheet. See Figure 1 below for the prescription sizing table, up to 4,000 square feet of new and replaced surface area.

Figure 1. Mercer Island Standard On-site Detention System Worksheet Table 1

Table 1

ON-SITE DETENTION DESIGN FOR PROJECTS BETWEEN 500 SF AND 9,500 SF NEW PLUS REPLACED IMPERVIOUS SURFACE AREA

New and Replaced Impervious Surface Area (sf)	Detention Pipe Diameter (in)	Detention Pipe Length (ft)		Lowest Orifice Diameter (in) ⁽³⁾		Distance from Outlet Invert to Second Orifice (ft)		Second Orifice Diameter (in)	
		B soils	C soils	B soils	C soils	B soils	C soils	B soils	C soils
500 to 1,000 sf	36"	30	22	0.5	0.5	2.2	2.0	0.5	0.8
	48"	18	11	0.5	0.5	3.3	3.2	0.9	0.8
	60"	11	7	0.5	0.5	4.2	3.4	0.5	0.6
1,001 to 2,000 sf	36"	66	43	0.5	0.5	2.2	2.3	0.9	1.4
	48"	34	23	0.5	0.5	3.2	3.3	0.9	1.2
	60"	22	14	0.5	0.5	4.3	3.6	0.9	0.9
2,001 to 3,000 sf	36"	90	66	0.5	0.5	2.2	2.4	0.9	1.9
	48"	48	36	0.5	0.5	3.1	2.8	0.9	1.5
	60"	30	20	0.5	0.5	4.2	3.7	0.9	1.1
3,001 to 4,000 sf	36"	120	78	0.5	0.5	2.4	2.2	1.4	1.6
	48"	62	42	0.5	0.5	2.8	2.9	0.8	1.3
	60"	42	26	0.5	0.5	3.8	3.9	0.9	1.3



As seen in Figure 1, the proposed detention pipe is 30 ft in length with a 60" diameter. The site soils are Type B/D per the Natural Resources Conservation Service Web Soil Survey. The lowest orifice is 0.5 inch in diameter, and the second orifice is 0.9 inch in diameter. See Attachment 1: City of Mercer Island On-Site Detention System Worksheet detention detail sheet for control structure details.

Driveway runoff will be collected in a Type 1 CB in the northwest corner of the driveway, then conveyed via 6" pipe to the detention pipe and control structure. Roof runoff will be tightlined to a 6" pipe which connects directly to the detention pipe. Outflow from the detention pipe will connect to the Mercer Island municipal storm system by 8" pipe. A new 48" Type 2 solid lid catchbasin will serve to connect the 8" pipe and the existing 12" storm pipe in the right of way.

CITY OF MERCER ISLAND

DEVELOPMENT SERVICES GROUP

9611 SE 36TH STREET | MERCER ISLAND, WA 98040

PHONE: 206.275.7605 | www.mercergov.org

Inspection Requests: Online: www.MyBuildingPermits.com VM: 206.275.7730



ON-SITE DETENTION DESIGN REQUIREMENTS

General Requirements

This guidance applies only to projects that meet the thresholds specified below in “Is On-site Detention Required for My Project?” if all of the on-site stormwater BMPs included on List #1 and List #2 are determined to be infeasible for roofs and/or other hard surfaces.

Is On-site Detention Required For My Project?

YES, if my project:

- 1) Results in 2,000 square feet, or greater, of new plus replaced hard surface area, or
- 2) Has a land disturbing activity or 7,000 square feet or greater, or
- 3) Results in a **net increase** of impervious surface of 500 square feet or greater.

AND

- 1) All of the on-site stormwater BMPs included on List #1 and List #2 are determined to be infeasible for roofs and/or other hard surfaces, and
- 2) Drainage from the site will be discharged to a storm and surface water system that includes a watercourse or there is a capacity constraint in the system.

NO, if my project:

- 1) Results in less than 2,000 square feet of new plus replaced hard surface area, and
- 2) Has a land disturbing activity less than 7,000 square feet, and
- 3) Results in a **net increase of less than 500 square feet** of impervious surface area.
- 4) The project discharges **directly** to Lake Washington, or findings from a ¼-mile downstream analysis confirm that the downstream system is free of capacity constraints.

Designing Your On-Site Detention System

All on-site detention system designs must be prepared by a professional engineer registered in the State of Washington. The Standard On-site Detention System worksheet (Attachment 1) must be submitted on 18" x 24" (minimum) size sheets.

Construction that results in 500 to 9,500 square feet of new plus replaced impervious surfaces:

Size system according to Table 1. The configuration of the on-site detention system shall be as shown on Attachment 1 (Standard On-Site Detention Systems Worksheet) or as specifically designed by the engineer for the site.

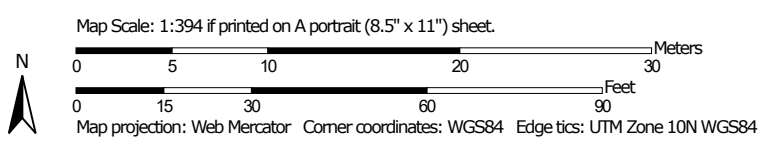
Note:

- The applicant may pay a fee-in-lieu-of constructing an on-site detention system when allowed by the City Engineer. The fee will not be an option when in the opinion of the City Engineer, undetained runoff from the development may adversely exacerbate an existing problem (MICC 15.11) or if flow control is required by Minimum Requirement #7.
- **Construction that results in more than 9,500 square feet of new plus replaced impervious surfaces and/or exceeds a 100-year flow frequency of 0.15 cubic feet per second (for moderate and steep sloped sites greater than a 5% slope):** Size system according to Minimum Requirement #7 (Flow Control) in the Stormwater Management Manual for Western Washington (Ecology 2014).

Soil Map—King County Area, Washington
(Kolbe Addition)




Soil Map may not be valid at this scale.



MAP LEGEND

Area of Interest (AOI)

 Area of Interest (AOI)

Soils

 Soil Map Unit Polygons

 Soil Map Unit Lines

 Soil Map Unit Points

Special Point Features



Blowout



Borrow Pit



Clay Spot



Closed Depression



Gravel Pit



Gravelly Spot



Landfill



Lava Flow



Marsh or swamp



Mine or Quarry



Miscellaneous Water



Perennial Water



Rock Outcrop



Saline Spot



Sandy Spot



Severely Eroded Spot



Sinkhole



Slide or Slip



Sodic Spot



Spoil Area



Stony Spot



Very Stony Spot



Wet Spot



Other



Special Line Features

Water Features



Streams and Canals

Transportation



Rails



Interstate Highways



US Routes



Major Roads



Local Roads

Background



Aerial Photography

MAP INFORMATION

The soil surveys that comprise your AOI were mapped at 1:24,000.

Warning: Soil Map may not be valid at this scale.

Enlargement of maps beyond the scale of mapping can cause misunderstanding of the detail of mapping and accuracy of soil line placement. The maps do not show the small areas of contrasting soils that could have been shown at a more detailed scale.

Please rely on the bar scale on each map sheet for map measurements.

Source of Map: Natural Resources Conservation Service

Web Soil Survey URL:

Coordinate System: Web Mercator (EPSG:3857)

Maps from the Web Soil Survey are based on the Web Mercator projection, which preserves direction and shape but distorts distance and area. A projection that preserves area, such as the Albers equal-area conic projection, should be used if more accurate calculations of distance or area are required.

This product is generated from the USDA-NRCS certified data as of the version date(s) listed below.

Soil Survey Area: King County Area, Washington

Survey Area Data: Version 16, Jun 4, 2020

Soil map units are labeled (as space allows) for map scales 1:50,000 or larger.

Date(s) aerial images were photographed: Jul 6, 2020—Jul 20, 2020

The orthophoto or other base map on which the soil lines were compiled and digitized probably differs from the background imagery displayed on these maps. As a result, some minor shifting of map unit boundaries may be evident.

Map Unit Legend

Map Unit Symbol	Map Unit Name	Acres in AOI	Percent of AOI
AgC	Alderwood gravelly sandy loam, 8 to 15 percent slopes	0.0	2.1%
AmB	Arents, Alderwood material, 0 to 6 percent slopes	0.4	97.9%
Totals for Area of Interest		0.4	100.0%

Map Unit Description ✕

[Printable Version](#)

Report — Map Unit Description ⌵

King County Area, Washington
AmB—Arents, Alderwood material, 0 to 6 percent slopes

Map Unit Setting

National map unit symbol: 1hmsp
Elevation: 160 to 590 feet
Mean annual precipitation: 35 to 60 inches
Mean annual air temperature: 50 degrees F
Frost-free period: 150 to 200 days
Farmland classification: Not prime farmland

Map Unit Composition

Arents, alderwood material, and similar soils: 100 percent

Estimates are based on observations, descriptions, and transects of the mapunit.

Description of Arents, Alderwood Material

Setting

Landform: Till plains
Parent material: Basal till

Typical profile

H1 - 0 to 26 inches: gravelly sandy loam
H2 - 26 to 60 inches: very gravelly sandy loam

Properties and qualities

Slope: 0 to 6 percent
Depth to restrictive feature: 20 to 40 inches to densic material
Drainage class: Moderately well drained
Capacity of the most limiting layer to transmit water (Ksat): Very low to moderately low (0.00 to 0.06 in/hr)
Depth to water table: About 16 to 36 inches
Frequency of flooding: None
Frequency of ponding: None
Available water capacity: Very low (about 2.3 inches)

Interpretive groups

Land capability classification (irrigated): None specified
Land capability classification (nonirrigated): 4s
Hydrologic Soil Group: B/D
Hydric soil rating: No

Description — Map Unit Description 📄

Table 1

ON-SITE DETENTION DESIGN FOR PROJECTS BETWEEN 500 SF AND 9,500 SF NEW PLUS REPLACED IMPERVIOUS SURFACE AREA

New and Replaced Impervious Surface Area (sf)	Detention Pipe Diameter (in)	Detention Pipe Length (ft)		Lowest Orifice Diameter (in) ⁽³⁾		Distance from Outlet Invert to Second Orifice (ft)		Second Orifice Diameter (in)	
		B soils	C soils	B soils	C soils	B soils	C soils	B soils	C soils
500 to 1,000 sf	36"	30	22	0.5	0.5	2.2	2.0	0.5	0.8
	48"	18	11	0.5	0.5	3.3	3.2	0.9	0.8
	60"	11	7	0.5	0.5	4.2	3.4	0.5	0.6
1,001 to 2,000 sf	36"	66	43	0.5	0.5	2.2	2.3	0.9	1.4
	48"	34	23	0.5	0.5	3.2	3.3	0.9	1.2
	60"	22	14	0.5	0.5	4.3	3.6	0.9	0.9
2,001 to 3,000 sf	36"	90	66	0.5	0.5	2.2	2.4	0.9	1.9
	48"	48	36	0.5	0.5	3.1	2.8	0.9	1.5
	60"	30	20	0.5	0.5	4.2	3.7	0.9	1.1
3,001 to 4,000 sf	36"	120	78	0.5	0.5	2.4	2.2	1.4	1.6
	48"	62	42	0.5	0.5	2.8	2.9	0.8	1.3
	60"	42	26	0.5	0.5	3.8	3.9	0.9	1.3
4,001 to 5,000 sf	36"	134	91	0.5	0.5	2.8	2.2	1.7	1.5
	48"	73	49	0.5	0.5	3.6	2.9	1.6	1.5
	60"	46	31	0.5	0.5	4.6	3.5	1.6	1.3
5,001 to 6,000 sf	36"	162	109	0.5	0.5	2.7	2.2	1.8	1.6
	48"	90	59	0.5	0.5	3.5	2.9	1.7	1.5
	60"	54	37	0.5	0.5	4.6	3.6	1.6	1.4
6,001 to 7,000 sf	36"	192	128	0.5	0.5	2.7	2.2	1.9	1.8
	48"	102	68	0.5	0.5	3.7	2.9	1.9	1.6
	60"	64	43	0.5	0.5	4.6	3.6	1.8	1.5
7,001 to 8,000 sf	36"	216	146	0.5	0.5	2.8	2.2	2.0	1.9
	48"	119	79	0.5	0.5	3.8	2.9	2.2	1.7
	60"	73	49	0.5	0.5	4.5	3.6	2.0	1.6
8,001 to 8,500 sf ⁽¹⁾	36"	228	155	0.5	0.5	2.8	2.2	2.1	1.9
	48"	124	84	0.5	0.5	3.7	2.9	1.9	1.8
	60"	77	53	0.5	0.5	4.6	3.6	2.0	1.6
8,501 to 9,000 sf	36"	NA ⁽¹⁾	164	0.5	0.5	NA ⁽¹⁾	2.2	NA ⁽¹⁾	1.9
	48"	NA ⁽¹⁾	89	0.5	0.5	NA ⁽¹⁾	2.9	NA ⁽¹⁾	1.9
	60"	NA ⁽¹⁾	55	0.5	0.5	NA ⁽¹⁾	3.6	NA ⁽¹⁾	1.7
9,001 to 9,500 sf ⁽²⁾	36"	NA ⁽¹⁾	174	0.5	0.5	NA ⁽¹⁾	2.2	NA ⁽¹⁾	2.1
	48"	NA ⁽¹⁾	94	0.5	0.5	NA ⁽¹⁾	2.9	NA ⁽¹⁾	2.0
	60"	NA ⁽¹⁾	58	0.5	0.5	NA ⁽¹⁾	3.7	NA ⁽¹⁾	1.7

Notes:

▪ Minimum Requirement #7 (Flow Control) is required when the 100-year flow frequency causes a 0.15 cubic feet per second increase (when modeled in WWHM with a 15-minute timestep). Breakpoints shown in this table are based on a flat slope (0-5%). The 100-year flow frequency will need to be evaluated on a site-specific basis for projects on moderate (5-15%) or steep (> 15%) slopes.

- Soil type to be determined by geotechnical analysis or soil map.
- Sizing includes a Volume Correction Factor of 120%.
- Upper bound contributing area used for sizing.

⁽¹⁾ On Type B soils, new plus replaced impervious surface areas exceeding 8,500 sf trigger Minimum Requirement #7 (Flow Control)

⁽²⁾ On Type C soils, new plus replaced impervious surface areas exceeding 9,500 sf trigger Minimum Requirement #7 (Flow Control)

⁽³⁾ Minimum orifice diameter = 0.5 inches

in = inch

ft = feet

sf = square feet

Basis of Sizing Assumptions:

Sized per MR#5 in the Stormwater Management Manual for Puget Sound Basin (1992 Ecology Manual)

SBUH, Type 1A, 24-hour hydrograph

2-year, 24-hour storm = 2 in; 10-year, 24-hour

storm = 3 in; 100-year, 24-hour storm = 4 in

Predeveloped = second growth forest (CN = 72 for Type B

soils, CN = 81 for Type C soils)

Developed = impervious (CN = 98)

0.5 foot of sediment storage in detention pipe

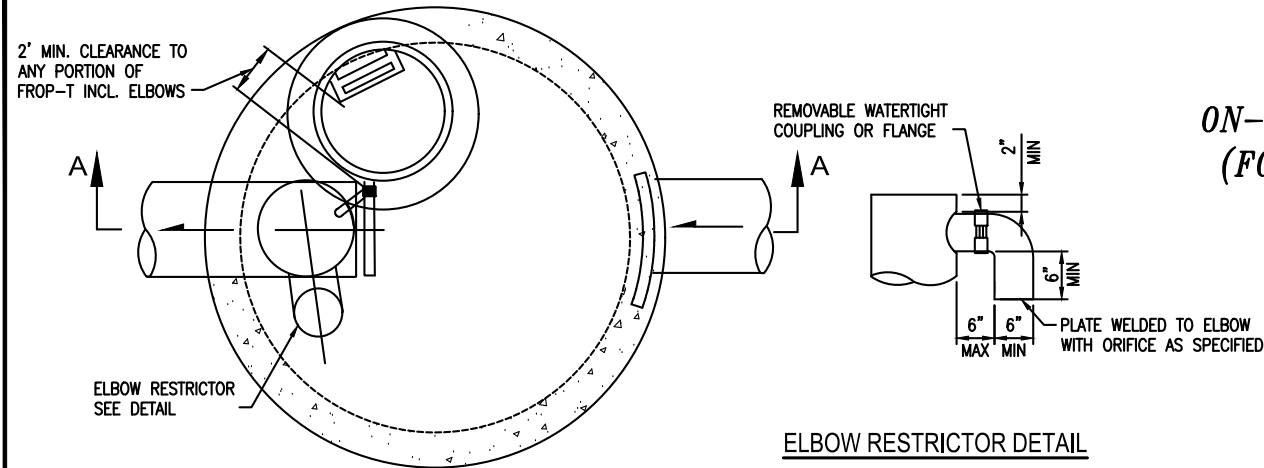
Overland slope = 5%

ATTACHMENT 1
CITY OF MERCER ISLAND
ON-SITE DETENTION SYSTEM WORKSHEET
(FOR NEW PLUS REPLACED IMPERVIOUS
AREA OF 9,500 SF OR LESS)



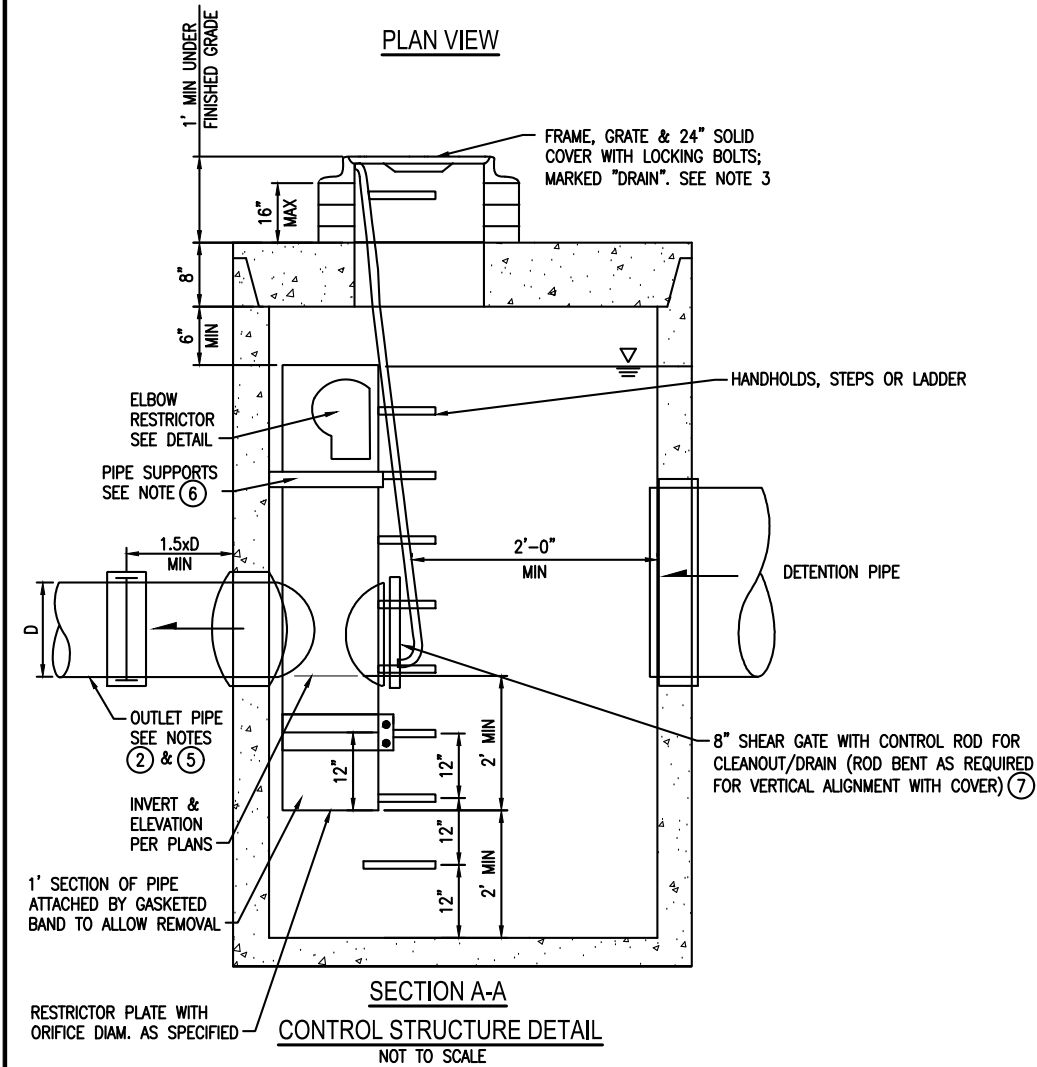
03/22/2022

OWNER: KOLBE	ADDRESS: 7001 82ND AVE SE	PREPARED BY: ZACHARY CRUM, P.E.
PERMIT #: TBD	MERCER ISLAND, WA	PHONE: (253) 627-4367
		DATE: 03/22/2022
NEW PLUS REPLACED IMPERVIOUS SURFACE AREA (SF): 2,122	DETENTION PIPE DIA (INCH): 60	DETENTION PIPE LENGTH (FT): 30
SOIL TYPE: ARENTS, ALDERWOOD MATERIAL (HSG B/D)	PIPE MATERIAL: PER ON-SITE DETENTION SYSTEM NOTE #3	ORIFICE #1 DIA 0.5 INCH, ELEV 278.63'
		ORIFICE #2 DIA 0.9 INCH, ELEV 284.83'



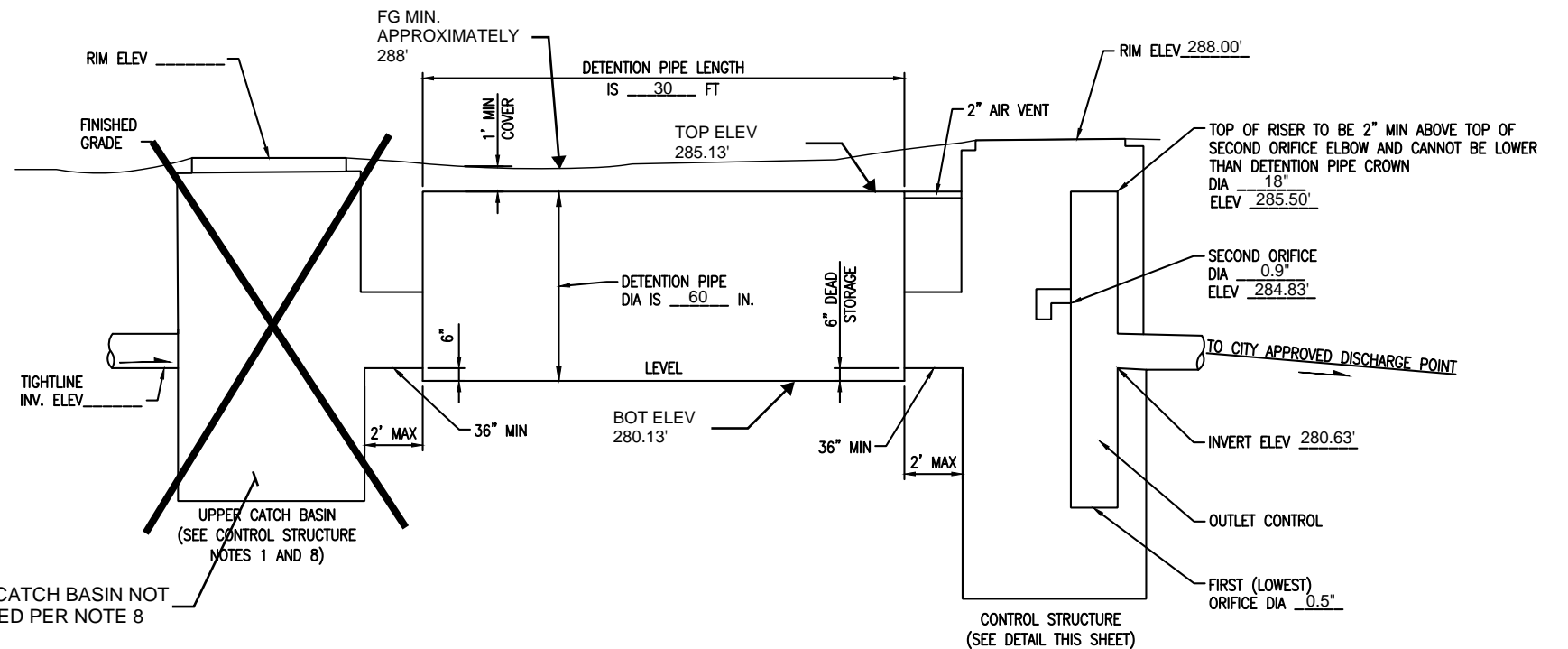
PLAN VIEW

ELBOW RESTRICTOR DETAIL



SECTION A-A

CONTROL STRUCTURE DETAIL
NOT TO SCALE



ON-SITE DETENTION SYSTEM
NOT TO SCALE (ENGINEER TO FILL IN BLANKS)

CONTROL STRUCTURE NOTES:

- ① USE A MINIMUM OF A 54 IN. DIAM. TYPE 2 CATCH BASIN. THE ACTUAL SIZE IS DEPENDENT ON CONNECTING PIPE MATERIAL AND DIAMETER.
- ② OUTLET PIPE: MIN. 6 INCH.
- ③ METAL PARTS: CORROSION RESISTANT. NON-GALVANIZED PARTS PREFERRED. GALVANIZED PIPE PARTS TO HAVE ASPHALT TREATMENT 1.
- ④ FRAME AND LADDER OR STEPS OFFSET SO:
 - A. CLEANOUT GATE IS VISIBLE FROM TOP;
 - B. CLIMB-DOWN SPACE IS CLEAR OF RISER AND CLEANOUT GATE;
 - C. FRAME IS CLEAR OF CURB.
- ⑤ IF METAL OUTLET PIPE CONNECTS TO CEMENT CONCRETE PIPE, OUTLET PIPE TO HAVE SMOOTH O.D. EQUAL TO CONCRETE PIPE I.D. LESS 1/4 IN.

- ⑥ PROVIDE AT LEAST ONE 3 X 0.090 GAUGE SUPPORT BRACKET ANCHORED TO CONCRETE WALL WITH 5/8 IN. STAINLESS STEEL EXPANSION BOLTS OR EMBEDDED SUPPORTS 2 IN. INTO CATCH BASIN WALL (MAXIMUM 3'-0" VERTICAL SPACING).
- ⑦ THE SHEAR GATE SHALL BE MADE OF ALUMINUM ALLOY IN ACCORDANCE WITH ASTM B 26M AND ASTM B 275, DESIGNATION ZG32A; OR CAST IRON IN ACCORDANCE WITH ASTM A 48, CLASS 30B. THE LIFT HANDLE SHALL BE MADE OF A SIMILAR METAL TO THE GATE (TO PREVENT GALVANIC CORROSION), IT MAY BE OF SOLID ROD OR HOLLOW TUBING, WITH ADJUSTABLE HOOK AS REQUIRED. A NEOPRENE RUBBER GASKET IS REQUIRED BETWEEN THE RISER MOUNTING FLANGE AND THE GATE FLANGE. INSTALL THE GATE SO THAT THE LEVEL-LINE MARK IS LEVEL WHEN THE GATE IS CLOSED. THE MATING SURFACES OF THE LID AND THE BODY SHALL BE MACHINED FOR PROPER FIT. ALL SHEAR GATE BOLTS SHALL BE STAINLESS STEEL.
- ⑧ THE UPPER CATCH BASIN IS REQUIRED IF THE LENGTH OF THE DETENTION PIPE IS GREATER THAN 50 FT.

ON-SITE DETENTION SYSTEM NOTES:

1. CALL DEVELOPMENT SERVICES (206-275-7605) 24 HOURS IN ADVANCE FOR A DETENTION SYSTEM INSPECTION BEFORE BACKFILLING AND FOR FINAL INSPECTIONS.
2. RESPONSIBILITY FOR OPERATION AND MAINTANANCE OF DRAINAGE SYSTEMS ON PRIVATE PROPERTY IS RESPONSIBILITY OF THE PROPERTY OWNER. MATERIAL ACCUMULATED IN THE STORAGE PIPE MUST BE REMOVED FROM CATCH BASINS TO ALLOW PROPER OPERATION. THE OUTLET CONTROL ORIFICE MUST BE KEPT OPEN AT ALL TIMES.
3. PIPE MATERIAL, JOINT, AND PROTECTIVE TREATMENT SHALL BE IN ACCORDANCE WITH SECTION 7.04 AND 9.05 OF THE WSDOT STANDARD SPECIFICATION FOR ROAD, BRIDGE, AND MUNICIPAL CONSTRUCTION, LATEST VERSION. SUCH MATERIALS INCLUDE THE FOLLOWING, LINED CORRUGATED POLYETHYLENE PIPE (LCPE), ALUMINIZED TYPE 2 CORRUGATED STEEL PIPE AND PIPE ARCH (MEETS AASHTO DESIGNATIONS M274 AND M36), CORRUGATED OR SPIRAL RIB ALUMINUM PIPE, OR REINFORCED CONCRETE PIPE. CORRUGATED STEEL PIPE IS NOT ALLOWED.
4. FOOTING DRAINS SHALL NOT BE CONNECTED TO THE DETENTION SYSTEM.